



**Going to Little Land**

When I arrive at Little Land, I will need to check in at the desk.



When I have checked in, I will go through to the main waiting area. There are tables and chairs here for me to sit on. Everyone waits here until it is time to go into Little Land and the white chain is taken away.



I will take my shoes off and make sure I have my socks on. My shoes can be put on the shelves when I get into the Little Land play area.

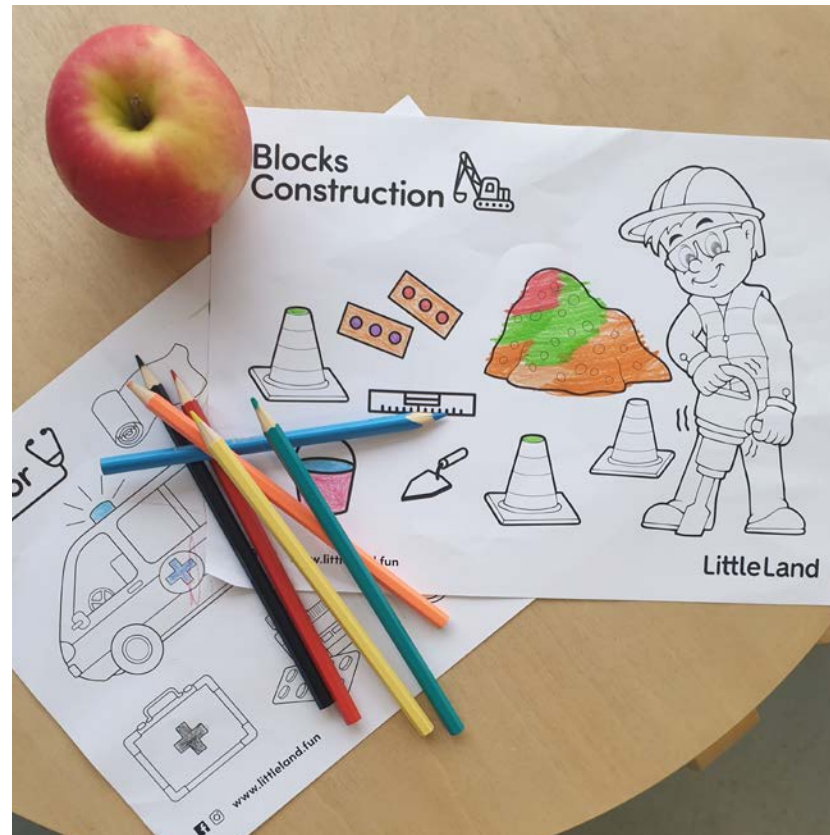


Everyone who visits Little Land wears socks to make sure  
Little Land is clean and safe for everyone.  
The people who work at Little Land must wear shoes.





I can colour in before I go into Little Land or I can eat some food.



The people who work at Little Land are here to help you.  
They wear a special apron that says Little Land.



The people who work at Little Land will show you the sand timer and talk to you about Little Land.

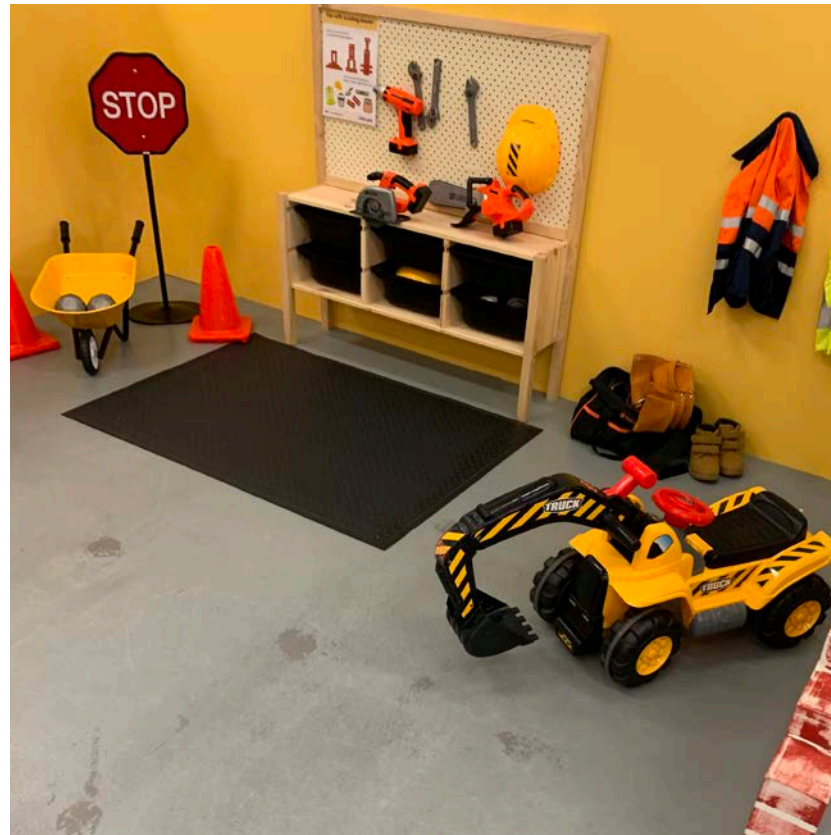




Then it will be time to go in and the white chain gates will be taken away.



There are lots of different play areas that I can go to. I can choose where I go in Little Land. There is a construction zone.



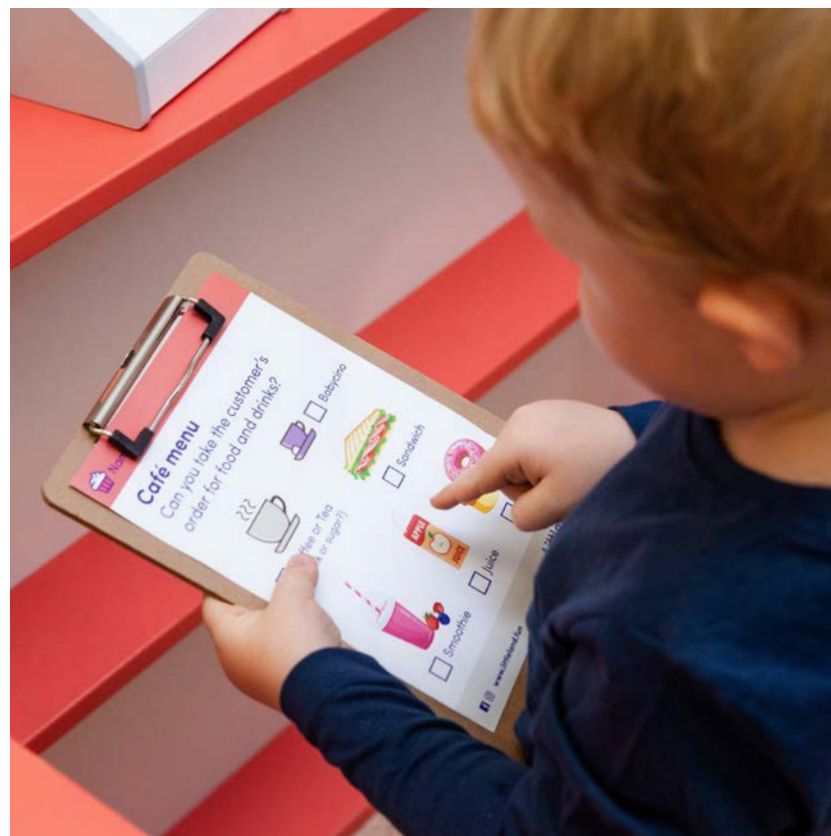
There is a fire truck.



There is a shopping market.



There are activity sheets in each play area.  
I can look at these for ideas if I don't know what to do.





When I am playing, I will try and remember there are lots of people around me. I will need to wait and take turns.

I will need to follow the Little Land rules.

We must always use gentle hands and there is no running allowed.



## **Gentle hands, gentle play**

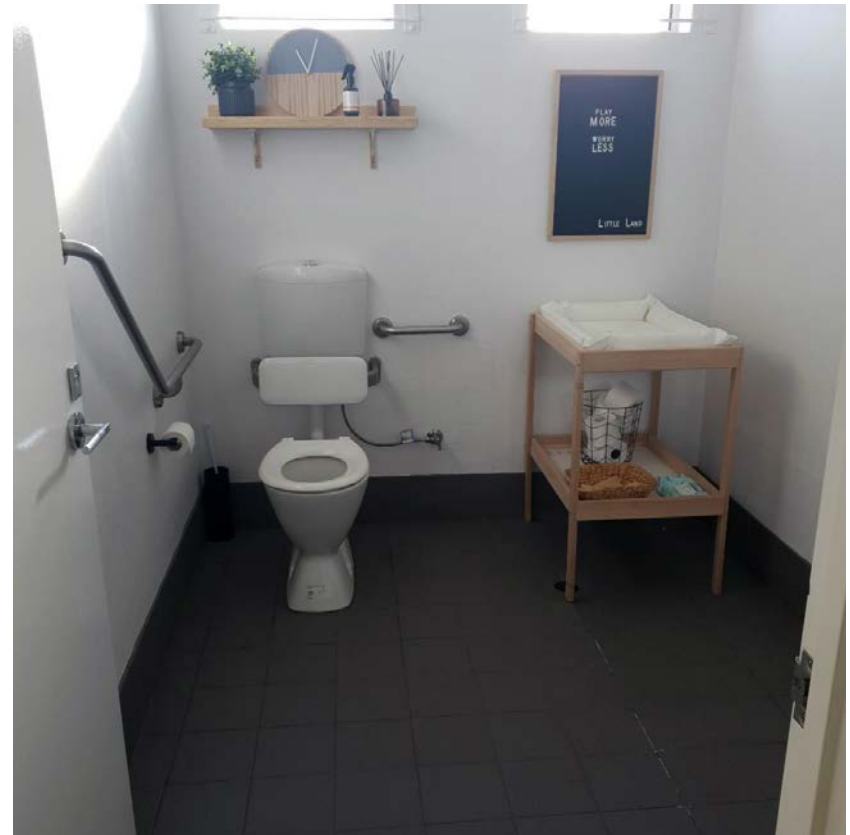
To keep our play space enjoyable for everyone,  
unruly behaviour will not be tolerated.



## **No running in the play area.**

Thank you!

There is a toilet at the back of Little Land.



If I need a break I can go to the Calm Corner. There is a chair for me to sit in and there are calming tools I can choose to use.



While I am playing, the people who work at Little Land will show me the sand timer to let me know that there is 10 minutes to go.

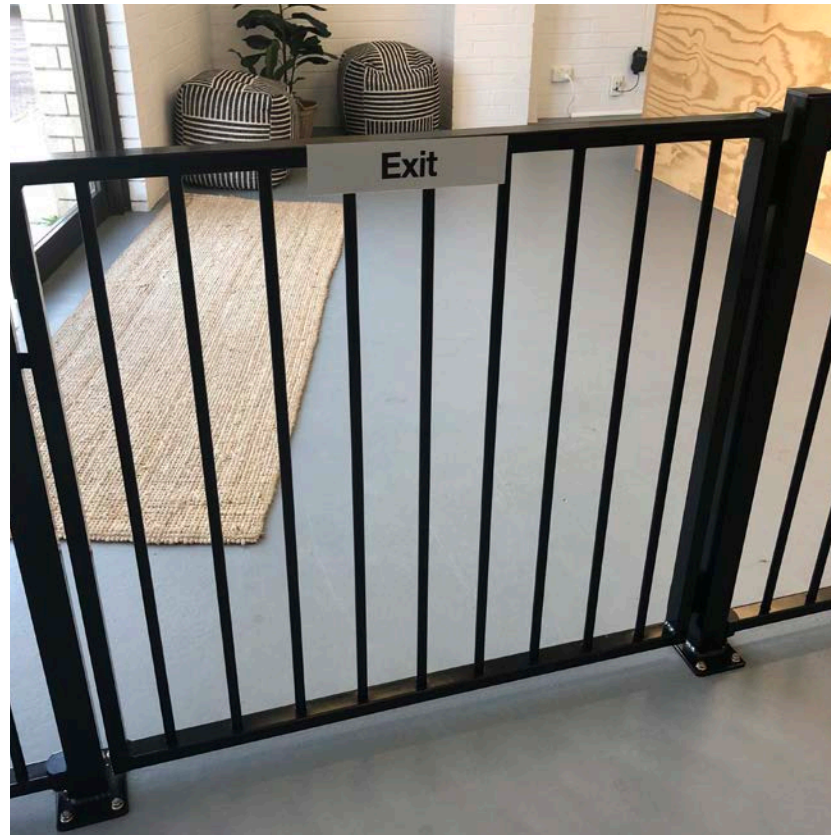


While I am playing, I will hear the bell ring when there is 5 minutes left to go. Everyone will start to pack away when the bell goes.





When the last bell goes, my time at Little Land has finished  
and I will need to go to the exit.



For more information regarding our Sensory Sessions,  
please email **hello@littleland.fun** or visit our website.



[www.littleland.fun](http://www.littleland.fun)

**LittleLand**